

THEATR Y GRAND ABERTAWE

GRAND

SWANSEA GRAND THEATRE



VISUAL STORY

This is Swansea Grand Theatre
WELCOME!

This story will help prepare you for your visit.

When you walk down Singleton Street you will see our big building, near the carpark.



You will walk through the front door into the foyer.



Box Office entrance



Main Foyer



As you enter the main entrance there is a Cafe in front of you.
Our Box Office is situated to the right



Our box office staff will give you your tickets for the show.
They can answer any questions you might have about the theatre



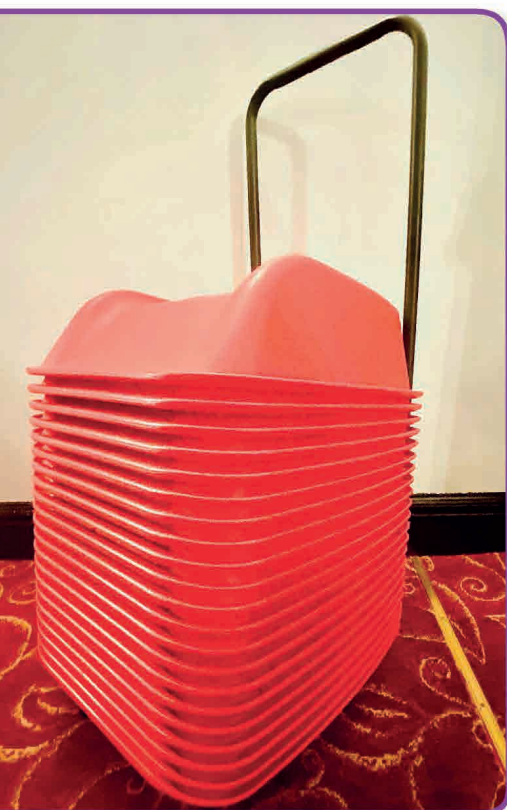
This is the lift which will take you to various levels of the theatre.



If you need the toilet they are located to the left of the box office along with an accessible toilet.



This is our theatre. You and other people with tickets to see the show can sit down in the red seats. Your ticket will tell you which seat you can sit in, but you can ask one of our ushers if you need help.



If you come to a regular performance just before the show starts the lights will go out very slowly and it will go dark.

Some people might be making a little bit of noise, but there is nothing to worry about.

The performers will then come on the stage and the show will start.

If you need a booster seat to see the show you can get one from the back wall of the theatre.



RELAXED
PERFORMANCE

If you come to a Relaxed Performance the main lights will stay on throughout the show and you can make a noise and move around.



If you need to take a break or go somewhere quiet a breakout room is available for you to go to at anytime in the circle bar.

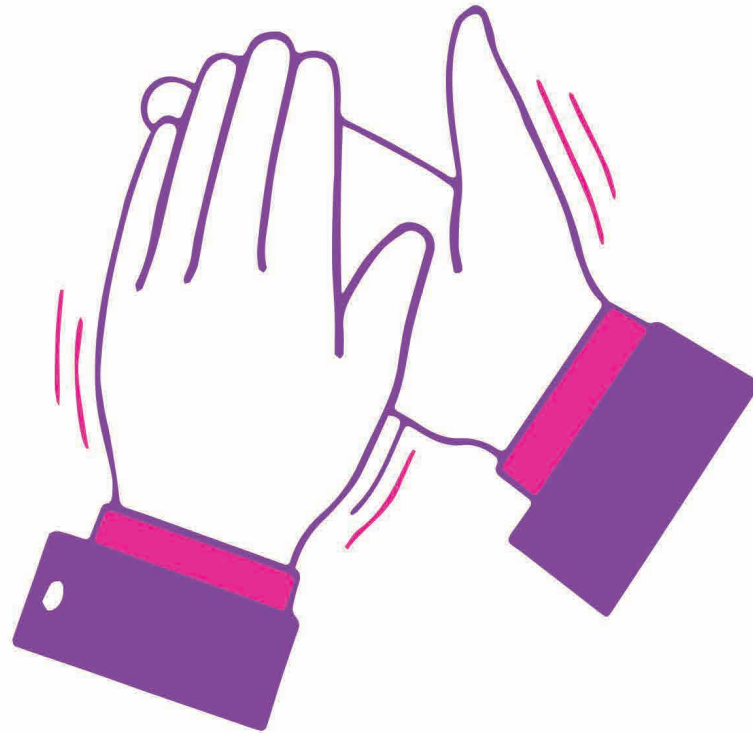
In the middle of the show we might have a break.

This is called an Interval

During the break, you can leave your seat to buy food and drinks or go to the toilet. There will be a bell to signal the end of the interval. This means it is time for you to return to your seat to see the rest of the show.

At the end everyone will clap their hands.

This lets the performers know that everybody has enjoyed watching the show



We hope you enjoy your visit!

If you have any questions before you visit you can

e-mail swansea.grandfrontofhouse@swansea.gov.uk

OR

telephone 01792 475715